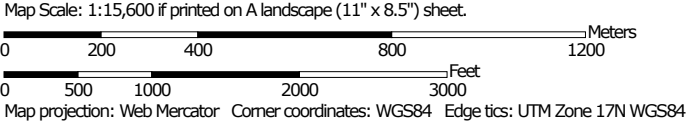
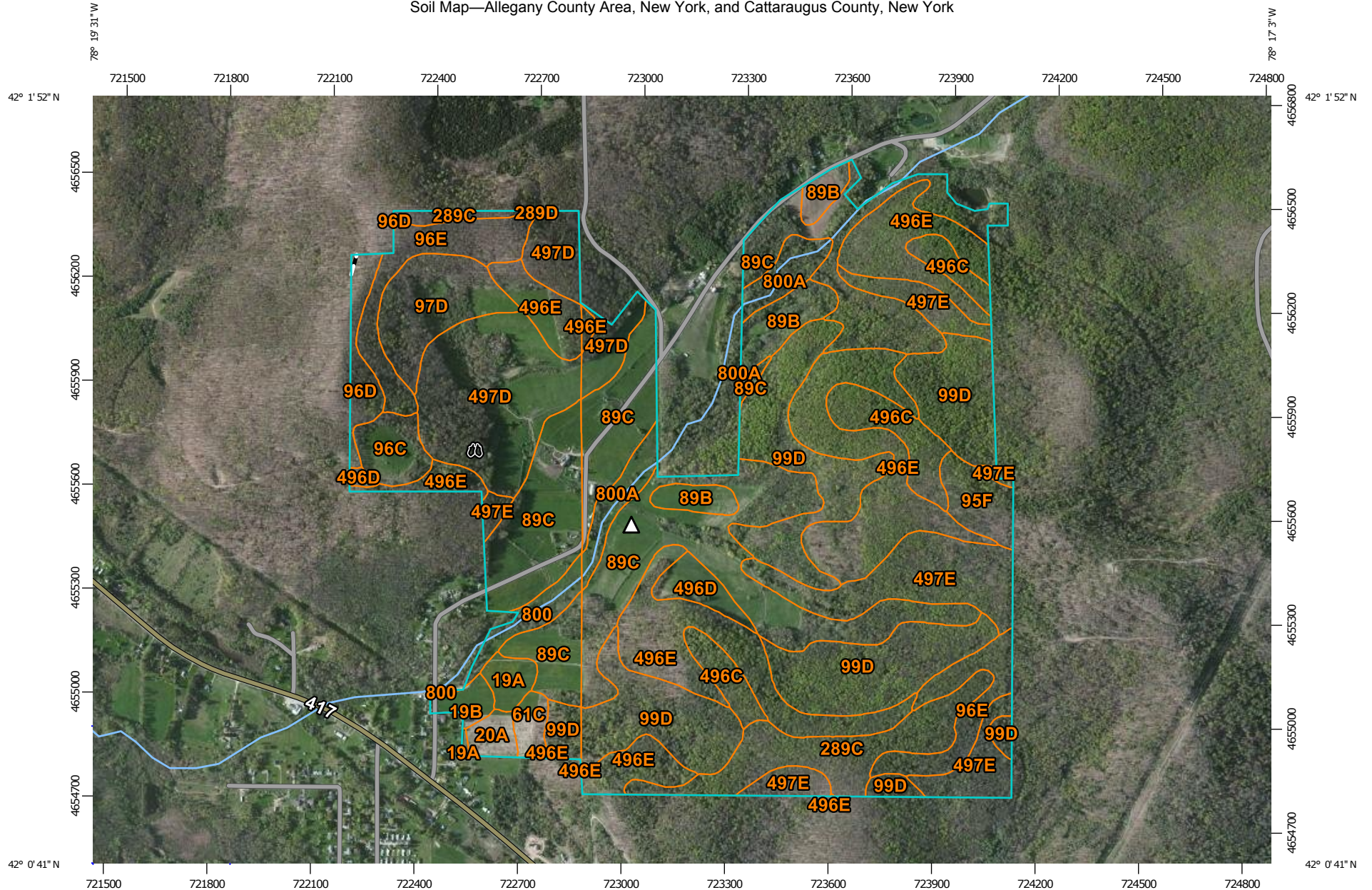


Soil Map—Allegany County Area, New York, and Cattaraugus County, New York



## MAP LEGEND

### Area of Interest (AOI)

 Area of Interest (AOI)

### Soils

 Soil Map Unit Polygons

 Soil Map Unit Lines

 Soil Map Unit Points

### Special Point Features



Blowout



Borrow Pit



Clay Spot



Closed Depression



Gravel Pit



Gravelly Spot



Landfill



Lava Flow



Marsh or swamp



Mine or Quarry



Miscellaneous Water



Perennial Water



Rock Outcrop



Saline Spot



Sandy Spot



Severely Eroded Spot



Sinkhole



Slide or Slip



Sodic Spot



Spoil Area



Stony Spot



Very Stony Spot



Wet Spot



Other



Special Line Features

### Water Features



Streams and Canals

### Transportation



Rails



Interstate Highways



US Routes



Major Roads



Local Roads

### Background



Aerial Photography

## MAP INFORMATION

The soil surveys that comprise your AOI were mapped at 1:24,000.

Please rely on the bar scale on each map sheet for map measurements.

Source of Map: Natural Resources Conservation Service

Web Soil Survey URL: <http://websoilsurvey.nrcs.usda.gov>

Coordinate System: Web Mercator (EPSG:3857)

Maps from the Web Soil Survey are based on the Web Mercator projection, which preserves direction and shape but distorts distance and area. A projection that preserves area, such as the Albers equal-area conic projection, should be used if more accurate calculations of distance or area are required.

This product is generated from the USDA-NRCS certified data as of the version date(s) listed below.

Soil Survey Area: Allegany County Area, New York

Survey Area Data: Version 18, Nov 20, 2013

Soil Survey Area: Cattaraugus County, New York

Survey Area Data: Version 13, Sep 21, 2012

Your area of interest (AOI) includes more than one soil survey area. These survey areas may have been mapped at different scales, with a different land use in mind, at different times, or at different levels of detail. This may result in map unit symbols, soil properties, and interpretations that do not completely agree across soil survey area boundaries.

Soil map units are labeled (as space allows) for map scales 1:50,000 or larger.

Date(s) aerial images were photographed: Apr 29, 2010—Jul 1, 2011

The orthophoto or other base map on which the soil lines were compiled and digitized probably differs from the background imagery displayed on these maps. As a result, some minor shifting of map unit boundaries may be evident.

## Map Unit Legend

Allegany County Area, New York (NY003)			
Map Unit Symbol	Map Unit Name	Acres in AOI	Percent of AOI
89B	Portville silt loam, 3 to 8 percent slopes	16.8	2.6%
89C	Portville silt loam, 8 to 15 percent slopes	101.7	15.7%
95F	Mandy channery silt loam, 35 to 70 percent slopes	9.1	1.4%
96E	Carrollton channery silt loam, 25 to 35 percent slopes	13.2	2.0%
99D	Buchanan silt loam, 15 to 25 percent slopes	104.3	16.1%
289C	Ceres channery silt loam, 8 to 15 percent slopes	25.9	4.0%
496C	Gilpin channery silt loam, 8 to 15 percent slopes	22.8	3.5%
496D	Gilpin channery silt loam, 15 to 25 percent slopes	6.3	1.0%
496E	Gilpin channery silt loam, 25 to 35 percent slopes	92.3	14.2%
497D	Rayne channery silt loam, 15 to 25 percent slopes	6.7	1.0%
497E	Rayne channery silt loam, 25 to 35 percent slopes	47.1	7.3%
800A	Holderton silt loam, 0 to 3 percent slopes	14.1	2.2%
<b>Subtotals for Soil Survey Area</b>		<b>460.5</b>	<b>70.9%</b>
<b>Totals for Area of Interest</b>		<b>649.3</b>	<b>100.0%</b>

Cattaraugus County, New York (NY009)			
Map Unit Symbol	Map Unit Name	Acres in AOI	Percent of AOI
19A	Olean silt loam, 0 to 3 percent slopes	4.9	0.8%
19B	Olean silt loam, 3 to 8 percent slopes	3.8	0.6%
20A	Unadilla silt loam, 0 to 3 percent slopes	4.0	0.6%
61C	Schuyler silt loam, 8 to 15 percent slopes	3.8	0.6%
89C	Portville silty clay loam, 8 to 15 percent slopes	36.7	5.7%
96C	Carrollton channery silt loam, 8 to 15 percent slopes	8.9	1.4%
96D	Carrollton channery silt loam, 15 to 25 percent slopes	7.8	1.2%

<b>Cattaraugus County, New York (NY009)</b>			
<b>Map Unit Symbol</b>	<b>Map Unit Name</b>	<b>Acres in AOI</b>	<b>Percent of AOI</b>
96E	Carrollton channery silt loam, 25 to 35 percent slopes	17.8	2.7%
97D	Kinzua channery silt loam, 15 to 25 percent slopes	20.3	3.1%
99D	Buchanan silt loam, 15 to 25 percent slopes	3.7	0.6%
289C	Ceres channery silt loam, 8 to 15 percent slopes	2.6	0.4%
289D	Ceres channery silt loam, 15 to 25 percent slopes	0.1	0.0%
496D	Gilpin channery silt loam, 15 to 25 percent slopes	0.8	0.1%
496E	Gilpin channery silt loam, 25 to 35 percent slopes	13.5	2.1%
497D	Rayne channery silt loam, 15 to 25 percent slopes	51.4	7.9%
497E	Rayne channery silt loam, 25 to 35 percent slopes	1.8	0.3%
800	Holderton silt loam	6.9	1.1%
<b>Subtotals for Soil Survey Area</b>		<b>188.8</b>	<b>29.1%</b>
<b>Totals for Area of Interest</b>		<b>649.3</b>	<b>100.0%</b>