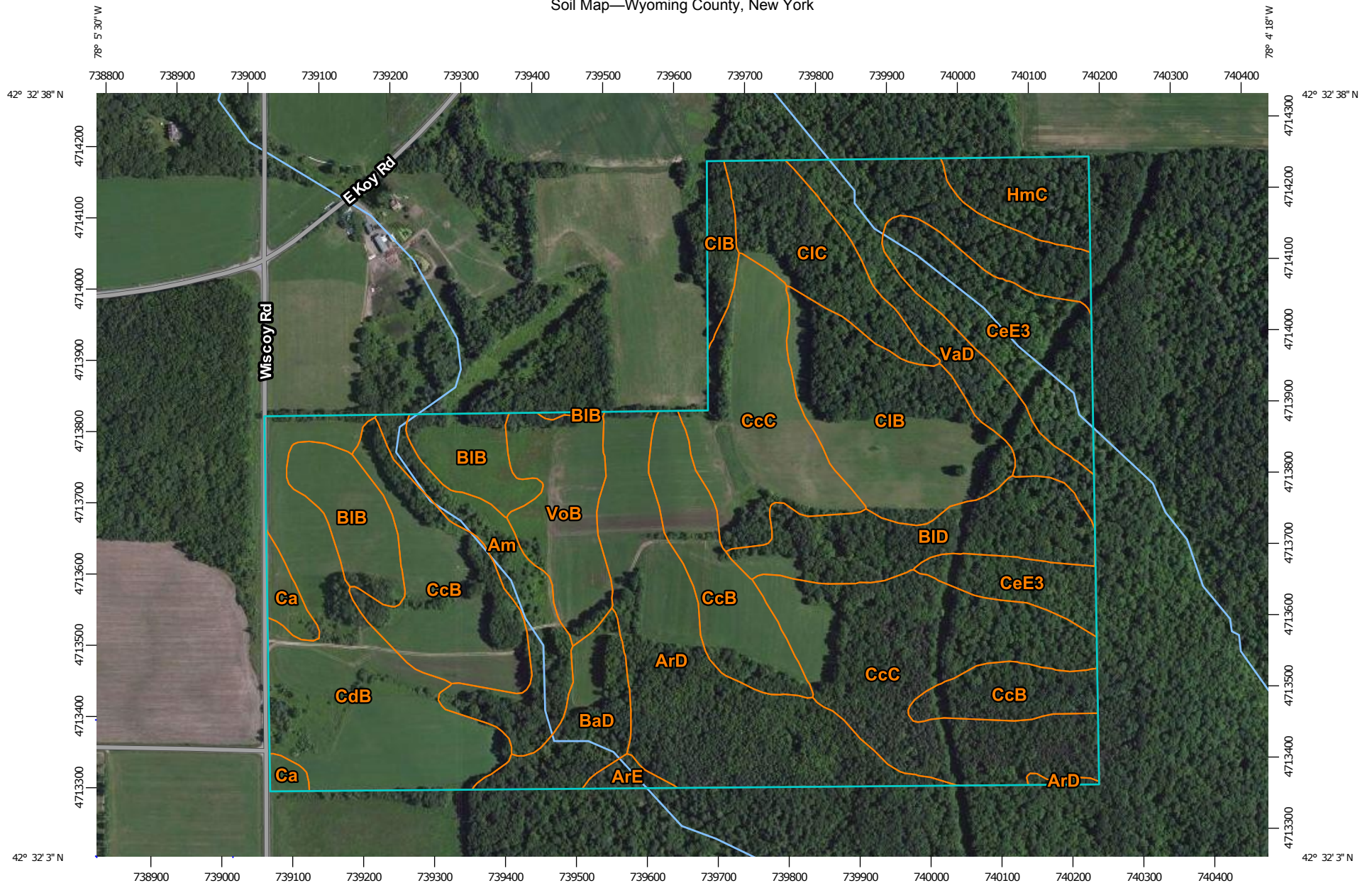
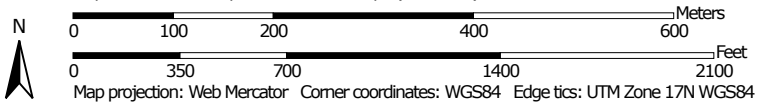


Soil Map—Wyoming County, New York



Map Scale: 1:7,550 if printed on A landscape (11" x 8.5") sheet.



MAP LEGEND

Area of Interest (AOI)

 Area of Interest (AOI)

Soils

 Soil Map Unit Polygons

 Soil Map Unit Lines

 Soil Map Unit Points

Special Point Features



Blowout



Borrow Pit



Clay Spot



Closed Depression



Gravel Pit



Gravelly Spot



Landfill



Lava Flow



Marsh or swamp



Mine or Quarry



Miscellaneous Water



Perennial Water



Rock Outcrop



Saline Spot



Sandy Spot



Severely Eroded Spot



Sinkhole



Slide or Slip



Sodic Spot



Spoil Area



Stony Spot



Very Stony Spot



Wet Spot



Other



Special Line Features

Water Features



Streams and Canals

Transportation



Rails



Interstate Highways



US Routes



Major Roads



Local Roads

Background



Aerial Photography

MAP INFORMATION

The soil surveys that comprise your AOI were mapped at 1:20,000.

Warning: Soil Map may not be valid at this scale.

Enlargement of maps beyond the scale of mapping can cause misunderstanding of the detail of mapping and accuracy of soil line placement. The maps do not show the small areas of contrasting soils that could have been shown at a more detailed scale.

Please rely on the bar scale on each map sheet for map measurements.

Source of Map: Natural Resources Conservation Service
 Web Soil Survey URL: <http://websoilsurvey.nrcs.usda.gov>
 Coordinate System: Web Mercator (EPSG:3857)

Maps from the Web Soil Survey are based on the Web Mercator projection, which preserves direction and shape but distorts distance and area. A projection that preserves area, such as the Albers equal-area conic projection, should be used if more accurate calculations of distance or area are required.

This product is generated from the USDA-NRCS certified data as of the version date(s) listed below.

Soil Survey Area: Wyoming County, New York
 Survey Area Data: Version 11, Dec 15, 2013

Soil map units are labeled (as space allows) for map scales 1:50,000 or larger.

Date(s) aerial images were photographed: Apr 15, 2011—Jul 1, 2011

The orthophoto or other base map on which the soil lines were compiled and digitized probably differs from the background imagery displayed on these maps. As a result, some minor shifting of map unit boundaries may be evident.

Map Unit Legend

Wyoming County, New York (NY121)			
Map Unit Symbol	Map Unit Name	Acres in AOI	Percent of AOI
Am	Alluvial land	7.8	3.9%
ArD	Arkport very fine sandy loam, 15 to 25 percent slopes	20.5	10.3%
ArE	Arkport very fine sandy loam, 25 to 40 percent slopes	0.8	0.4%
BaD	Bath channery silt loam, 15 to 25 percent slopes	5.7	2.9%
BIB	Bath-Valois gravelly loams, 3 to 8 percent slopes	9.3	4.6%
BID	Bath-Valois gravelly loams, 15 to 25 percent slopes	10.7	5.3%
Ca	Canadice silty clay loam	1.9	1.0%
CcB	Canaseraga silt loam, 3 to 8 percent slopes	23.5	11.7%
CcC	Canaseraga silt loam, 8 to 15 percent slopes	34.4	17.2%
CdB	Caneadea silt loam, 3 to 8 percent slopes	19.8	9.9%
CeE3	Caneadea silty clay loam, 25 to 50 percent slopes, eroded	14.3	7.1%
CIB	Chenango gravelly loam, 3 to 8 percent slopes	16.6	8.3%
CIC	Chenango gravelly loam, 8 to 15 percent slopes	7.9	4.0%
HmC	Howard gravelly loam, 8 to 15 percent slopes	4.9	2.5%
VaD	Varysburg gravelly loam, 15 to 25 percent slopes	14.1	7.0%
VoB	Volusia channery silt loam, 3 to 8 percent slopes	8.0	4.0%
Totals for Area of Interest		200.3	100.0%