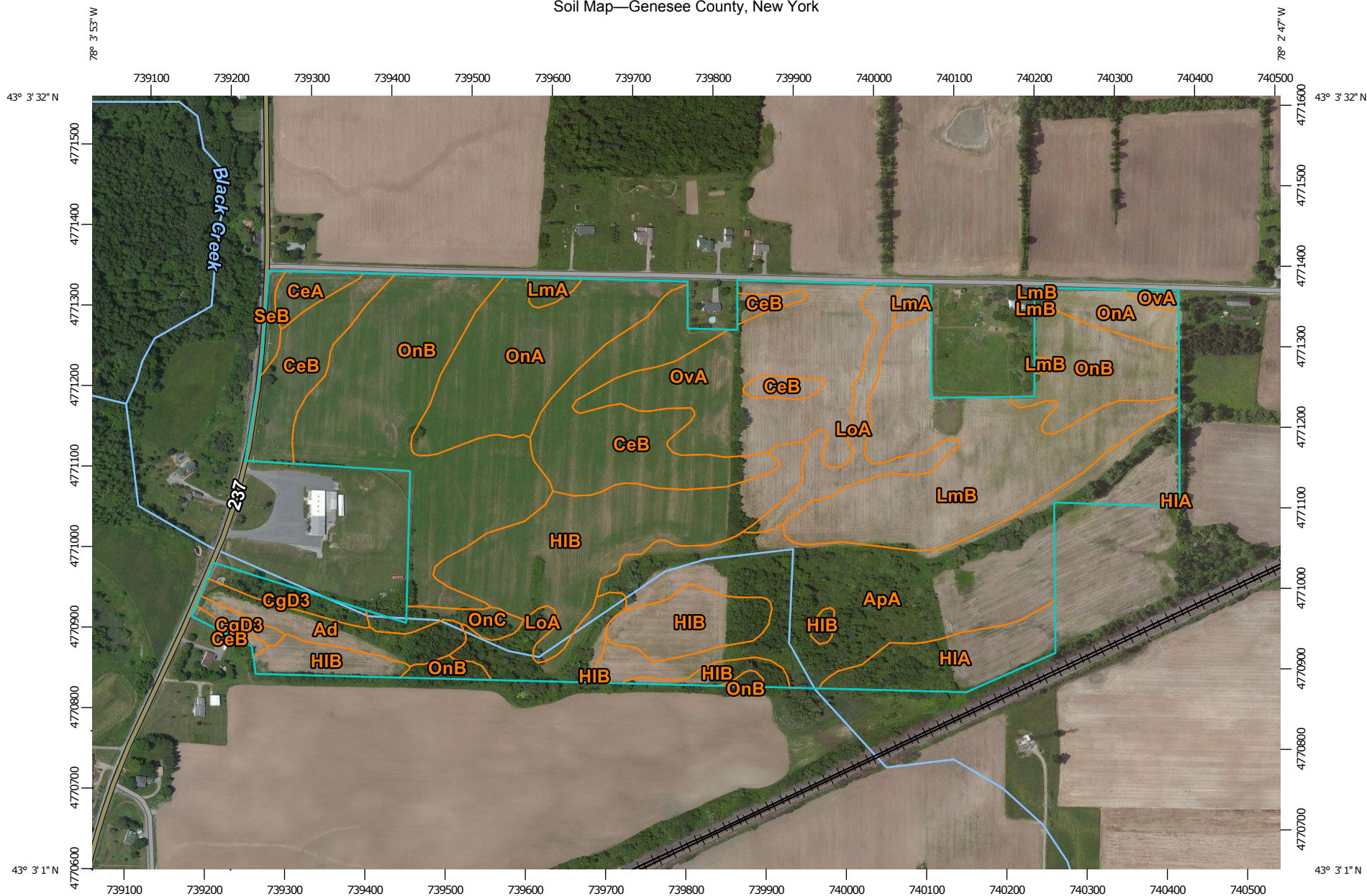
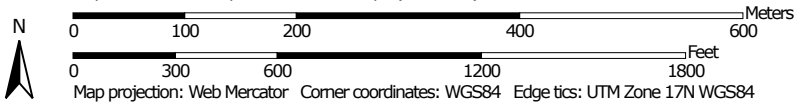


Soil Map—Genesee County, New York



Map Scale: 1:6,770 if printed on A landscape (11" x 8.5") sheet.



## MAP LEGEND

### Area of Interest (AOI)

 Area of Interest (AOI)

### Soils

 Soil Map Unit Polygons

 Soil Map Unit Lines

 Soil Map Unit Points

### Special Point Features



Blowout



Borrow Pit



Clay Spot



Closed Depression



Gravel Pit



Gravelly Spot



Landfill



Lava Flow



Marsh or swamp



Mine or Quarry



Miscellaneous Water



Perennial Water



Rock Outcrop



Saline Spot



Sandy Spot



Severely Eroded Spot



Sinkhole



Slide or Slip



Sodic Spot



Spoil Area



Stony Spot



Very Stony Spot



Wet Spot



Other



Special Line Features

### Water Features



Streams and Canals

### Transportation



Rails



Interstate Highways



US Routes



Major Roads



Local Roads

### Background



Aerial Photography

## MAP INFORMATION

The soil surveys that comprise your AOI were mapped at 1:24,000.

Warning: Soil Map may not be valid at this scale.

Enlargement of maps beyond the scale of mapping can cause misunderstanding of the detail of mapping and accuracy of soil line placement. The maps do not show the small areas of contrasting soils that could have been shown at a more detailed scale.

Please rely on the bar scale on each map sheet for map measurements.

Source of Map: Natural Resources Conservation Service  
 Web Soil Survey URL: <http://websoilsurvey.nrcs.usda.gov>  
 Coordinate System: Web Mercator (EPSG:3857)

Maps from the Web Soil Survey are based on the Web Mercator projection, which preserves direction and shape but distorts distance and area. A projection that preserves area, such as the Albers equal-area conic projection, should be used if more accurate calculations of distance or area are required.

This product is generated from the USDA-NRCS certified data as of the version date(s) listed below.

Soil Survey Area: Genesee County, New York  
 Survey Area Data: Version 12, Dec 1, 2011

Soil map units are labeled (as space allows) for map scales 1:50,000 or larger.

Date(s) aerial images were photographed: Jun 2, 2010—Jul 1, 2011

The orthophoto or other base map on which the soil lines were compiled and digitized probably differs from the background imagery displayed on these maps. As a result, some minor shifting of map unit boundaries may be evident.

## Map Unit Legend

Genesee County, New York (NY037)			
Map Unit Symbol	Map Unit Name	Acres in AOI	Percent of AOI
Ad	Alden mucky silt loam	2.7	2.2%
ApA	Appleton silt loam, 0 to 3 percent slopes	19.4	16.0%
CeA	Cazenovia silt loam, 0 to 3 percent slopes	1.0	0.8%
CeB	Cazenovia silt loam, 3 to 8 percent slopes	13.1	10.7%
CgD3	Cazenovia silty clay loam, 15 to 25 percent slopes, eroded	1.8	1.4%
HIA	Hilton loam, 0 to 3 percent slopes	4.0	3.3%
HIB	Hilton loam, 3 to 8 percent slopes	16.2	13.3%
LmA	Lima silt loam, 0 to 3 percent slopes	0.9	0.8%
LmB	Lima silt loam, 3 to 8 percent slopes	13.8	11.4%
LoA	Lyons silt loam, 0 to 3 percent slopes	6.1	5.0%
OnA	Ontario loam, 0 to 3 percent slopes	10.5	8.6%
OnB	Ontario loam, 3 to 8 percent slopes	19.7	16.2%
OnC	Ontario loam, 8 to 15 percent slopes	1.1	0.9%
OvA	Ovid silt loam, 0 to 3 percent slopes	11.0	9.1%
SeB	Schoharie silt loam, 1 to 6 percent slopes	0.5	0.4%
<b>Totals for Area of Interest</b>		<b>121.7</b>	<b>100.0%</b>